



Population
11,870 inhabitants
1,000 inhabitants



LOCAL ECONOMY
The most developed economic sector in the Municipality are:
- food production
- other production
- services
- agriculture
- construction
There is a small number of companies that export their products in foreign countries and export. It is a number of medium-sized companies. The export-oriented companies are the most numerous in the Municipality.

EMPLOYMENT
According to the latest data, the unemployment rate in the Municipality of Novi Mesto is 10.4%. The highest unemployment rate is in the sector of food production.
HOUSING
Individual housing already built in the Municipality is around 10,000 units. The housing market is growing. The most popular housing type is the house with a garden. The most popular housing type is the house with a garden.

EDUCATION
The Municipality is responsible for the education of children and young people. The Municipality is responsible for the education of children and young people. The Municipality is responsible for the education of children and young people.
HOUSING
Individual housing already built in the Municipality is around 10,000 units. The housing market is growing. The most popular housing type is the house with a garden. The most popular housing type is the house with a garden.

HEALTH
There is one health institution in the Municipality, the Health Center. The Health Center is responsible for the health of the population. The Health Center is responsible for the health of the population. The Health Center is responsible for the health of the population.

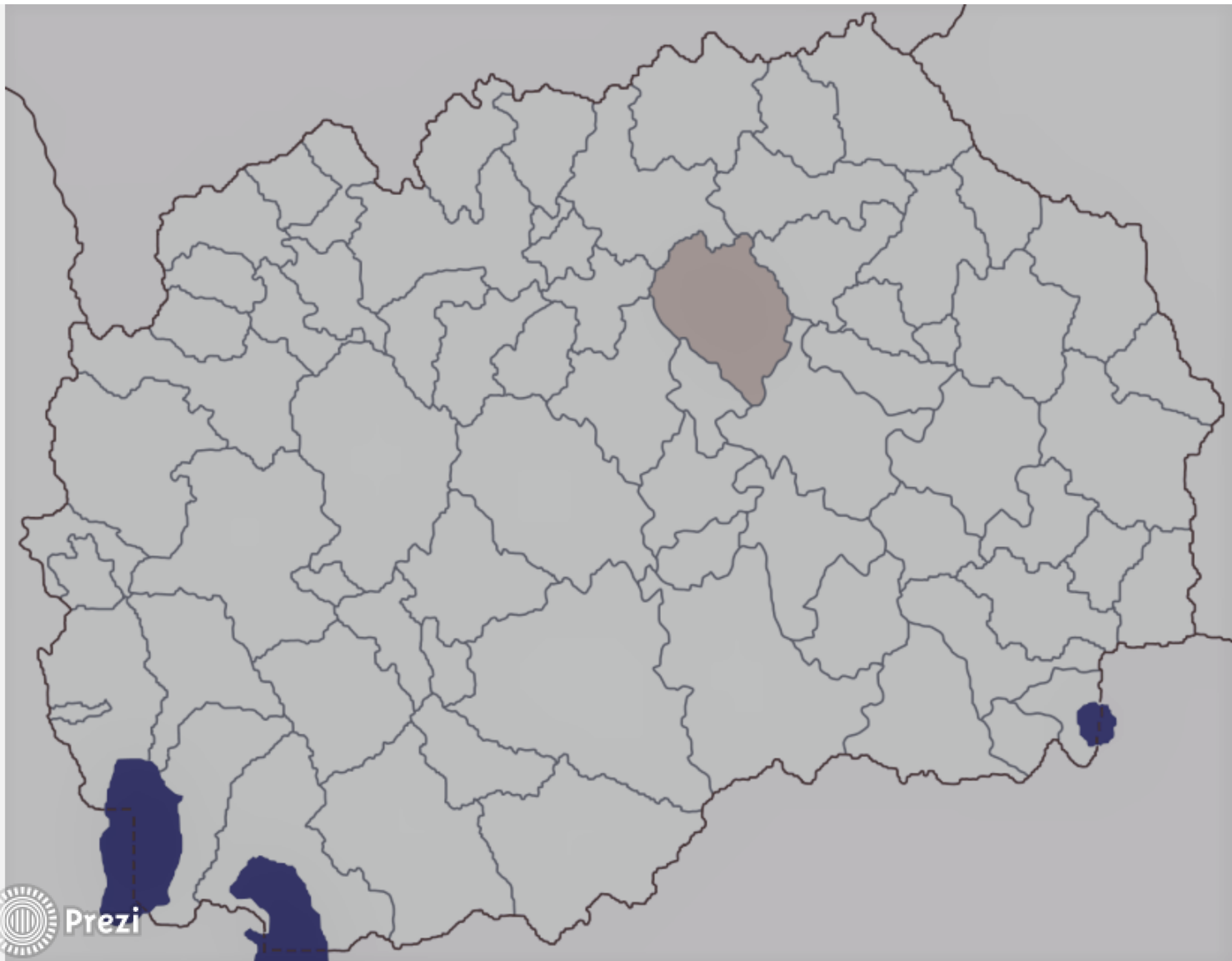
WASTE MANAGEMENT
Waste management is a very important issue in the Municipality. The Municipality is responsible for the waste management. The Municipality is responsible for the waste management. The Municipality is responsible for the waste management.

AGRICULTURE
Agriculture is a very important sector in the Municipality. The Municipality is responsible for the agriculture. The Municipality is responsible for the agriculture. The Municipality is responsible for the agriculture.



Municipality of Sveti Nikole, Republic of Macedonia





Prezi





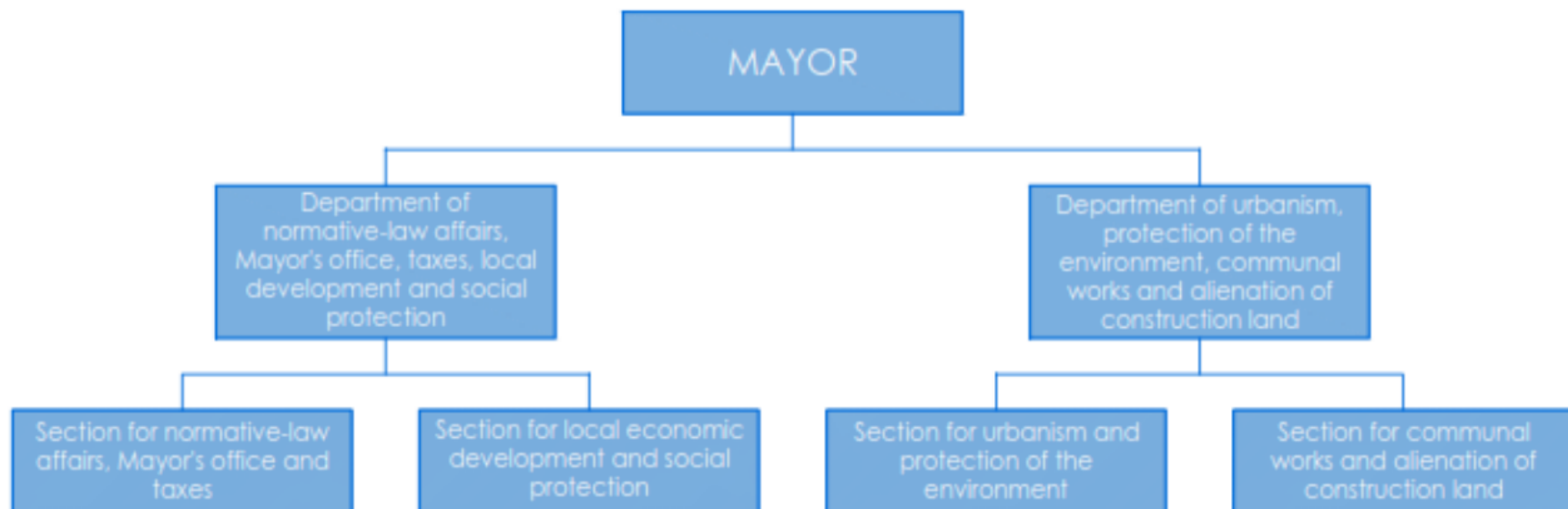
Population

- 18497 settled in 34 settlements
- 13746 urban area
- 5236 rural area

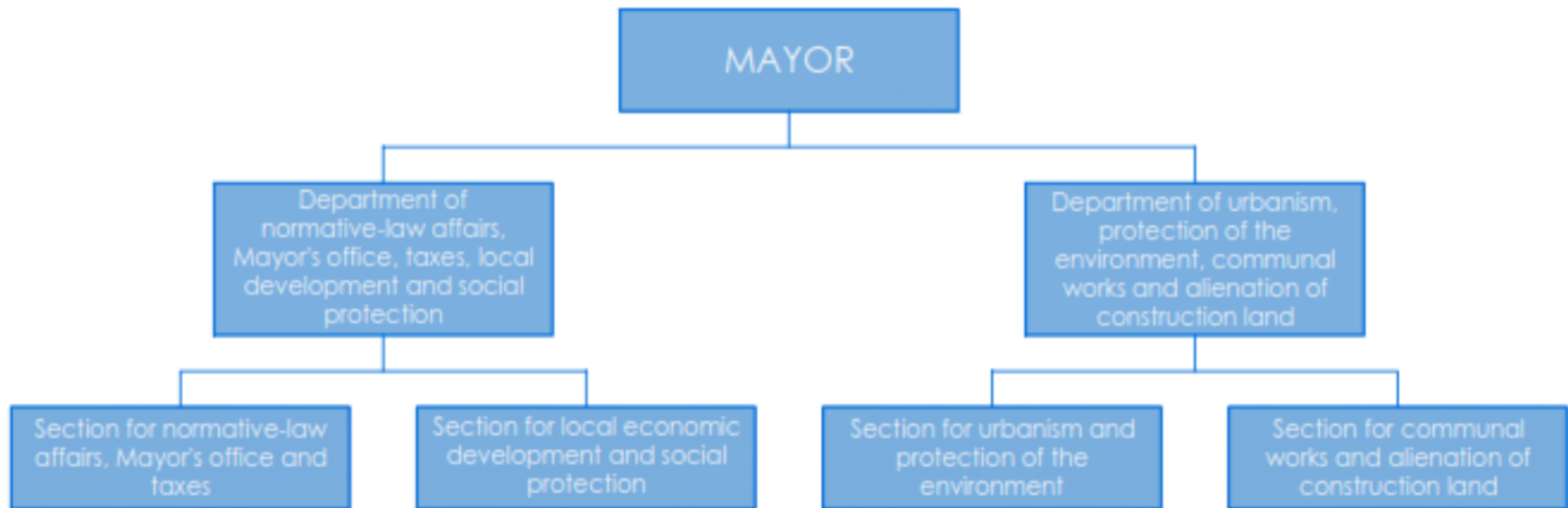


Local government

The Municipality of Sveti Nikole as a Local Government specifies the activities and competences of the **Mayor** and the **Local Council** according to the **Statut of the Municipality**.



specifies the activities and competences of the **Mayor** and the **Local Council** according to the **Statut of the Municipality**.





LOCAL ECONOMY

The most developed economic sectors in the Municipality are:

- food production
- textile production
- market
- services
- agriculture
- stock-breeding.

There is a small number of companies that export their products in foreign countries and usually it is a matter of indirect export. The export oriented companies are the most successful in the Municipality.



EMPLOYMENT

According to the Census 2002, the unemployment rate in Municipality of Sveti Nikole is 40.6%, despite the employment rate which is 36.6%.



HOUSING

According to the Census 2002, the unemployment rate in Municipality of Sveti Nikole is 40.6%, despite the employment rate which is 36.6%.



HOUSING

Individual housing-already built in the Municipality is consisted of 92% of family houses with gardens, 5% of double family houses and 3% houses in a row. In all collective buildings in the Municipality in all 3 zones of the town there are 873 flats.



EDUCATION

Municipality cares for improving of the educational system and promoting of qualitative education, with proving better conditions for the students and teachers.

In the Municipality there are:

- one kindergarten with two buildings
- three primary schools
- one secondary school and
- one international university from Moskow



HEALTH

There is one public health institution in the Municipality, Primarius D-r Gjorgji Gavrilski.

There are two buildings and seven local ambulances in the rural areas.

The health institution offers preventive, specialist and consulting medical care.



WASTE MANAGEMENT

Regular waste collection services are mainly limited to urban areas, providing up to 90% coverage in cities and their outskirts.

In total, around 70% of the total population receives regular waste collection services, while the remaining 30%, residing in rural settlements distant from the main collection areas, manage wastes on their own.

The collection of the rubbish is run by the Public Comunal Enterprise “Comunalec” with 10-13 ton waste per day from which 70% is paper and plastic and 1ton is construction waste. The waste per year is 18 497 m³.



AGRICULTURE

Ovche Pole is famous agriculture and stock-breeding region.

People here have always worked as agriculturalists and stock-breeders, since the region has fertile soil with special value, large number of sunny days and irrigation system which covers 8000 ha of plough soil.

Farming is the main and basic branch of agriculture and is the most common for this region, taking into consideration the climate structure and the Ovche Pole region is a ideal ground for raising vast number of farm cultures which are one of the best in the world according its quantity and quality.